

2025 | V1

PRODUCT CATALOGUE 2025



Lockout Range

esko[®]
eskosafety.com



VL7201 WARNING
Out of service



VL7202 DANGER
Barricade tag



VL7203 CAUTION
Barricade tag



VL7204 DANGER Hold



VL7205 DANGER
Energy source



VL7206 DANGER
Locked Out



VL7207 DANGER Do not operate



VL7208 DANGER Do not operate



VL7209 DANGER Do not start



VL7210 Information
tag



VL7211 DANGER High voltage



VL7212 DANGER Do not open



VL7213 DANGER This valve must not be operated



VL7214 DANGER Isolate switch before removing cover



VL7215 WARNING
Mechanical lift only



VL7216 WARNING
Heavy 2 person lift



VL7217 DANGER Do not operate electricians working



VL7218 DANGER 240 Volts



VL7219 DANGER Do not drink this water



VL7220 DANGER
Blank



VL7221 WARNING
Blank



VL7222 DANGER
Blank with chevrons



VL7223 WARNING
Blank with chevrons



VL7224 DANGER Out of order



VL7225 DANGER
Defective equipment
Do not use



VL7226 WARNING
Out of service needs repair



VL7227 WARNING
Commissioning in service



VL7228 WARNING
Out of service

FEATURES:

- Made from 200 micron synthetic stock
- 90mm x 135mm tags
- Sold in packs of 25x / 100x

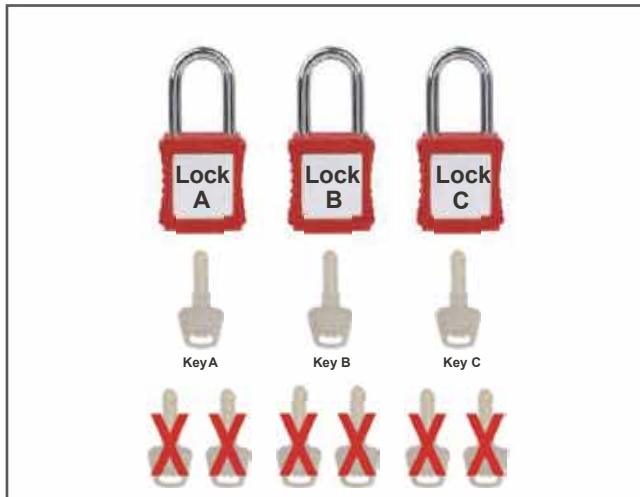
OPTIONS:

- **VL7198** 90x135mm Blank tag
- **VL7199** 90x135mm Custom design tag
- **VL7300** Custom size & Custom design tag

LOCKOUT PADLOCK - KEY MANAGEMENT SYSTEM

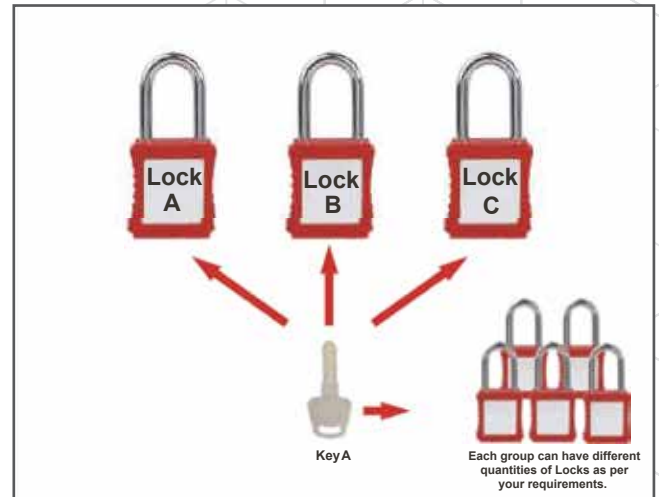
The Lockout Padlocks come with both Keyed Different and Keyed Alike options, along with a Master key system. This allows a high level of customisation for complex lockout systems with Multi level access and a wide range of different Groups. See below for Diagrams of each Key option.

Keyed Different



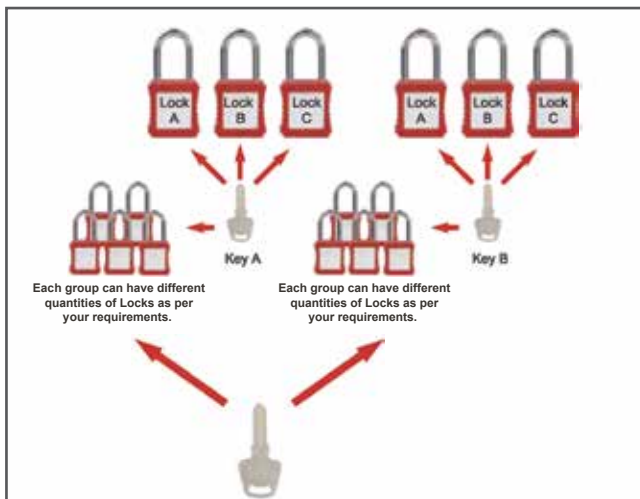
Each Lock has only One Key. The Key does not open any other Locks. Ideal for Maximum Safety in High Risk applications. Only the Lock owner can remove the Lock with no risk of accidental removals.

Keyed Alike



Each Lock within a designated group takes the same Key. The Key will open all Locks within the Group. Multiple Groups can be set up with different keys. Ideal for situations where individuals need multiple padlocks. Requires careful Management to ensure no crossover of Keyed alike Padlocks between staff.

Keyed Alike with Master Key

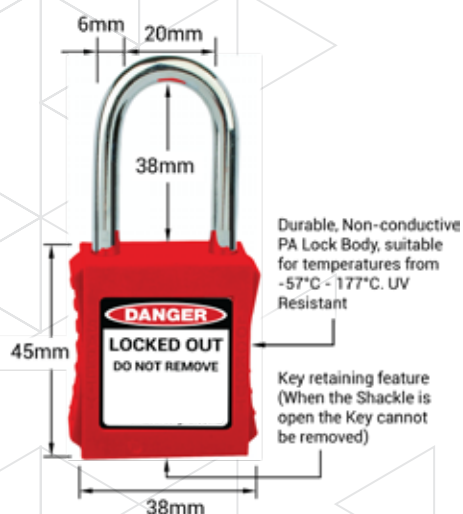


Exactly the same principle as the standard Keyed Alike Locks, except there is a Master Key which will open all Groups. Also ideal for Plant Shutdown situations. A designated Supervisor has the ability to remove any locks left after the job is finished. Must be managed very carefully to minimise the risk associated with this type of system.

Lockout Padlock - Unique ID Systems

The Lockout Padlocks can be specified with Custom Printed Labels. These labels can support a number of Variable Printed fields, including a Photo ID, Name, Mobile Number and any other relevant information to allow easy Identification. This can significantly reduce the time taken to resolve the issue of Padlocks left in place after the job is completed. Especially helpful in Planned shutdown situations where it is important to re-energise and re-start plant as quickly as possible.

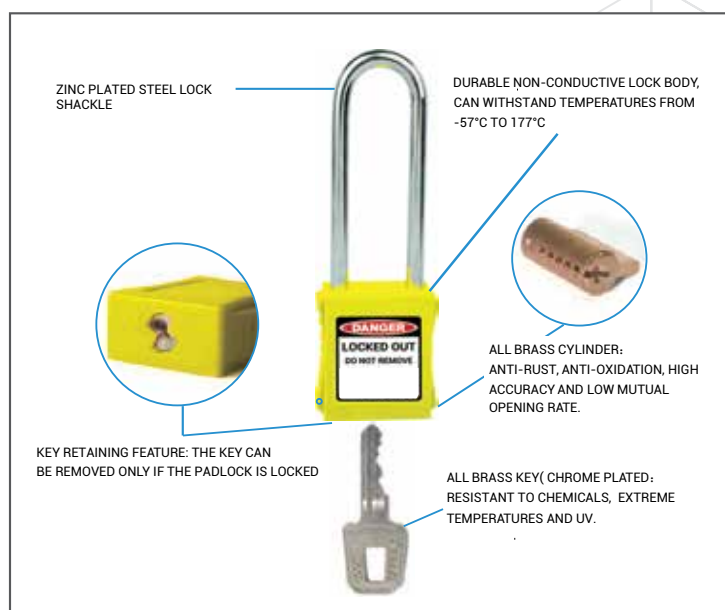
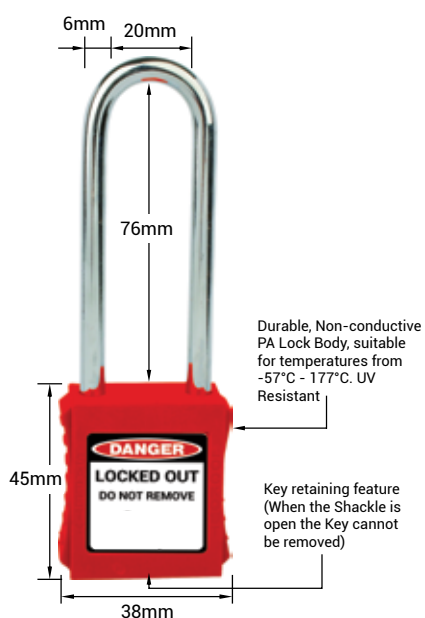




Padlock Colour	Keyed Alike (KA) Padlock Code	Keyed Different (KD) Padlock Code	Master Key Code (Suits KA Padlocks)
Red	VLP700-KA-RD	VLP700-KD-RD	VLP700-KA-RD-MK
Yellow	VLP700-KA-YE	VLP700-KD-YE	VLP700-KA-YE-MK
Green	VLP700-KA-GN	VLP700-KD-GN	VLP700-KA-GN-MK
Blue	VLP700-KA-BU	VLP700-KD-BU	VLP700-KA-BU-MK
Orange	VLP700-KA-OR	VLP700-KD-OR	VLP700-KA-OR-MK
Purple	VLP700-KA-PU	VLP700-KD-PU	VLP700-KA-PU-MK
Black	VLP700-KA-BK	VLP700-KD-BK	VLP700-KA-BK-MK
White	VLP700-KA-WH	VLP700-KD-WH	VLP700-KA-WH-MK

VLP701

Long Steel Shackle Padlock



Padlock Colour	Keyed Alike (KA) Padlock Code	Keyed Different (KD) Padlock Code	Master Key Code (Suits KA Padlocks)
Red	VLP701-KA-RD	VLP701-KD-RD	VLP701-KA-RD-MK
Yellow	VLP701-KA-YE	VLP701-KD-YE	VLP701-KA-YE-MK
Green	VLP701-KA-GN	VLP701-KD-GN	VLP701-KA-GN-MK
Blue	VLP701-KA-BU	VLP701-KD-BU	VLP701-KA-BU-MK
Orange	VLP701-KA-OR	VLP701-KD-OR	VLP701-KA-OR-MK
Purple	VLP701-KA-PU	VLP701-KD-PU	VLP701-KA-PU-MK
Black	VLP701-KA-BK	VLP701-KD-BK	VLP701-KA-BK-MK
White	VLP701-KA-WH	VLP701-KD-WH	VLP701-KA-WH-MK

VLP702

Standard Nylon Shackle Padlock

Padlock Colour	Keyed Alike (KA) Padlock Code	Keyed Different (KD) Padlock Code
Red	VLP702-KA-RD	VLP702-KD-RD
Yellow	VLP702-KA-YE	VLP702-KD-YE
Green	VLP702-KA-GN	VLP702-KD-GN
Blue	VLP702-KA-BU	VLP702-KD-BU

** Dimensions & Specifications are the same as VLP700, apart from the Nylon Shackle for Non-Conductive Applications.



VLP703

Long Nylon Shackle Padlock



Padlock Colour	Keyed Alike (KA) Padlock Code	Keyed Different (KD) Padlock Code
Red	VLP703-KA-RD	VLP703-KD-RD
Yellow	VLP703-KA-YE	VLP703-KD-YE
Green	VLP703-KA-GN	VLP703-KD-GN
Blue	VLP703-KA-BU	VLP703-KD-BU

** Dimensions & Specifications are the same as VLP701, apart from the Nylon Shackle for Non-Conductive Applications.

VLP704

Steel Cable Padlock

Padlock Colour	Keyed Alike (KA) Padlock Code	Keyed Different (KD) Padlock Code
Red	VLP704-KA-RD	VLP704-KD-RD
Yellow	VLP704-KA-YE	VLP704-KD-YE

- > 3mm Diameter Steel Cable
- > 150mm Cable Length



VLP705

Economy Steel Short Shackle Padlock



Padlock Colour	Keyed Alike (KA) Padlock Code	Only available as Keyed Different!
Black	VLP7045-KA-BK	NOT AVAILABLE

- > 6mm Diameter Shackle
- > Shackle opening 20mm high x 20mm wide

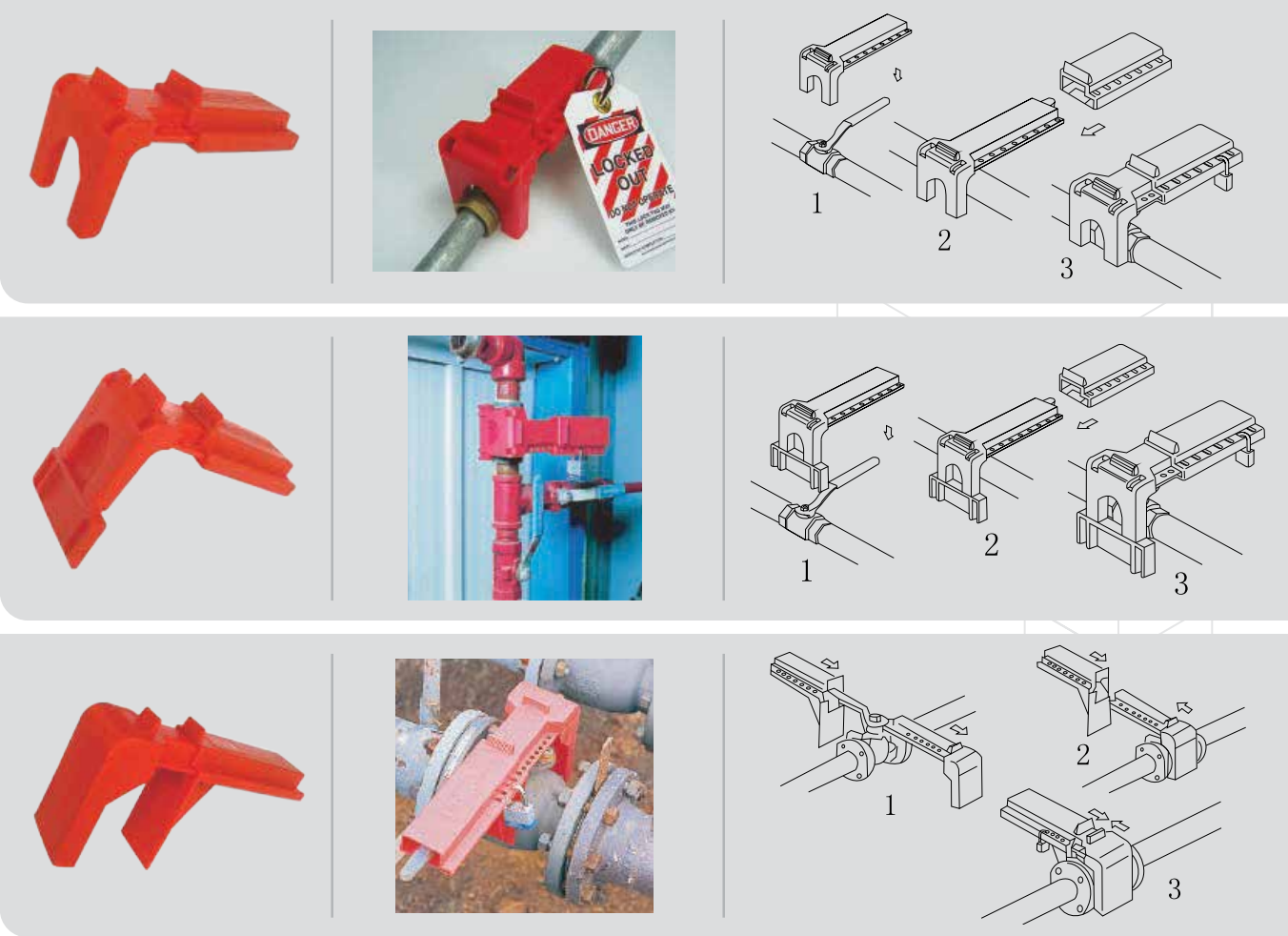
DISTRIBUTED BY

Code	Size
VLV701-1	9.5-32mm (0.375-1.25")
VLV701-2	38-63.5mm (1.5-2.5")
VLV701-3	50-203mm (2-8")

The butterfly valve lock is made up from three parts as shown below.



Different ways to use a Butterfly Valve Lock



VLV702 Series

Gate Valve Lockout

Code	Size
VLV702-1	25-63.5mm (1-2.5")
VLV702-2	63.5-127mm (2.5-5")
VLV702-3	127-165mm (5-6.5")
VLV702-4	165-254mm (6.5-10")
VLV703-A	25-165mm (1-6.5") (universal size)



The gate valve lockout can be used in two different ways as shown below.

Example of how the gate valve lockout is used:



VLV700 Series

Ball Valve Lockout

Code	Size
VLV700-1	12.5-63.5mm (0.5-2.5")
VLV700-2	50-203mm (2-8")



Example of how the ball valve lockout is used:



DISTRIBUTED BY

100

esko[®]

eskosafety.com

VLH701-6-25/38

Steel Lockout Hasp

Size: 25mm
> 6 locks

Code: VLH701-6-25

Size: 38mm
> 6 locks

Code: VLH701-6-38



VLH702-6-38

Steel Lockout Hasp with Anti-Twist Hooks

Size: 38mm
> 6 locks



VLH703-6-38

Aluminium Lockout Hasp - Anti Spark



Size: 38mm
> 6 locks



VLH704-6-1 Nylon Lockout Hasp



Size: 41.5 x 193mm
> 6 locks
> 6.5mm Shackle



VLH704-6-2 Nylon Lockout Hasp

Code: VLH704-6-2

Size: 43 x 173mm
> 6 locks
> 6mm Shackle



VLH705-4-3 Nylon Lockout Hasp



Code: VLH705-4-3
Size: 61 x 107mm
> 4 locks
> 3mm Shackle

VLH705-4-6 Nylon Lockout Hasp

Code: VLH705-4-6

Size: 61 x 107mm
> 4 locks
> 6mm Shackle



DISTRIBUTED BY

VLE700-IN/OUT

Mini Circuit Breaker Lockout

Code: VLE700-IN

> Pin in

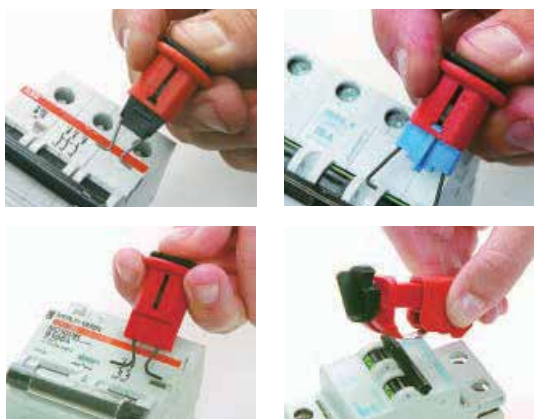


Code: VLE700-OUT

> Pin out



Example of how electrical lockouts pin in and pin out are used:



VLE701-1

Mini Circuit Breaker Lockout

Size: 45 x 25 x 10mm



VLE701-2

Mini Circuit Breaker Lockout

Size: 51 x 25 x 23mm



VLE701-3

Mini Circuit Breaker Lockout

Size: 51 x 21 x 23mm



VLE701-4

Mini Circuit Breaker Lockout

Size: 125 x 63 x 40mm



Example of how electrical lockouts are used:



VLE702

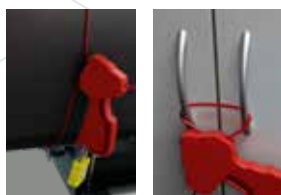
Electrical Plug Lockout

Size: 97 x 95 x 170mm



VLE703

Universal Cable Lockout



Size: 3.5mm cable x 2.4m long

VLE705

Bag Style Lockout

Size: 440 x 245mm
Bag opening width 220mm



VLE704

Adjustable Cable Lockout



Size: 6mm cable x 1.8m long

VLA700

Pneumatic Lockout

Size: 6.4 x 9.5 x 12.7mm
Suits 6.4mm, 9.5mm & 12.7mm male fittings



DISTRIBUTED BY

VLB700

Lockout Belt Bag

Size: 180 x 50 x 150



VLB701

Lockout Carry Bag

Size: 310 x 200 x 23



VLK700/1

Lockable Key Stations

- Metal cabinet for lockout key management.
- 30 key station code: VLK700
- 80 key station code: VLK701



VLS700

Lockable Station

- 5 - 10 locks



VLS701

Lockable Station

- 10 - 20 locks



VLS7 series

Basic Lockout Padlock Holder

Code	Size
VLS710	Fits 5 padlocks
VLS711	Fits 10 padlocks
VLS712	Fits 15 padlocks
VLS713	Fits 20 padlocks



DISTRIBUTED BY

